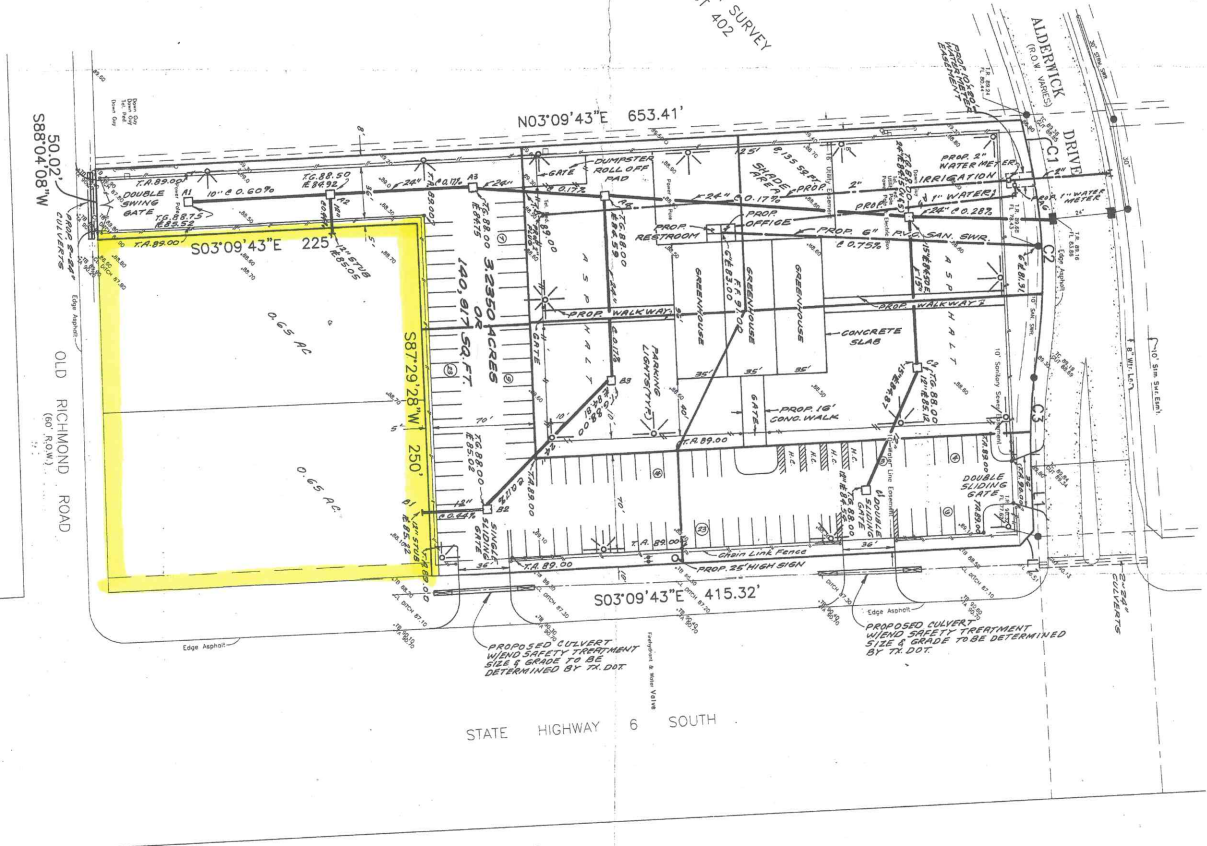


JOHN LEVERTON SURVEY
ABSTRACT 402



F.B. No. 584-1



Hydro-Statistics

Station	Flow (cfs)	Velocity (ft/sec)	Depth (ft)	Area (sq ft)	Perimeter (ft)	Wetted Perimeter (ft)	Hydraulic Radius (ft)	Velocity (ft/sec)	Discharge (cfs)
1+00	100	1.5	1.5	225	60	45	4.5	1.5	150
1+10	200	2.0	2.0	400	80	60	3.33	2.0	400
1+20	300	2.5	2.5	562.5	100	75	2.5	2.5	750
1+30	400	3.0	3.0	720	120	90	2.0	3.0	1200
1+40	500	3.5	3.5	875	140	105	1.67	3.5	1750
1+50	600	4.0	4.0	1020	160	120	1.5	4.0	2400
1+60	700	4.5	4.5	1155	180	135	1.41	4.5	3150
1+70	800	5.0	5.0	1280	200	150	1.33	5.0	4000
1+80	900	5.5	5.5	1395	220	165	1.27	5.5	4950
1+90	1000	6.0	6.0	1500	240	180	1.22	6.0	6000

CITY OF HOUSTON STORM SEWER CALCULATION FORM

PIPE	LENGTH	DIAMETER	MANHOLE	LENGTH	MANHOLE	LENGTH	MANHOLE	LENGTH	MANHOLE
C1	770	0.75	25.44	12.72	25.44	12.72	25.44	12.72	25.44
C2	400	2.0	145.80	73.75	145.80	73.75	145.80	73.75	145.80
C3	400	12.0	74.80	37.41	74.80	37.41	74.80	37.41	74.80

LINE TABLE

LINE	BEARING	DISTANCE
L1	N89°45'00"E	14.23'
L2	S87°45'00"E	14.23'

3/4" in work upstream side of Bridge @ Basnett
and Houston Hwy
T' Cut in top Culvert (N) side of Alsbury West
Side Basnett
NCS DARTCO
1973 sep.

RAYBURN CHERY ENGINEERS, INC.
Consulting Engineers
3734 GULF ST.
HOUSTON, TEXAS PH(713)844-2831
71801

HOUSTON GARDENS No. 9A
10010 HWY. 6 SOUTH
HOUSTON, TEXAS, 77478

Scale: 1"=40'
Date: March 23, 2000
By: Vincent Chery
Checked: M. D. Smith
MAP NO. 4523

- GENERAL NOTES:
- CONDUCTED SURVEY OF THIS PROJECT IN ACCORDANCE WITH THE SURVEYING ACT OF 1921 AND THE SURVEYING ACT OF 1927.
 - ALL DISTANCES ARE IN FEET AND DECIMALS THEREOF.
 - ALL BEARINGS ARE TRUE BEARINGS.
 - CONDUCTED SURVEY OF THIS PROJECT IN ACCORDANCE WITH THE SURVEYING ACT OF 1921 AND THE SURVEYING ACT OF 1927.
 - ALL DISTANCES ARE IN FEET AND DECIMALS THEREOF.
 - ALL BEARINGS ARE TRUE BEARINGS.